

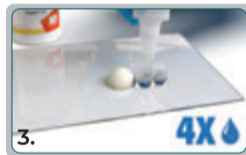
MTA^{PEX}™ BIOCERAMIC ROOT CANAL SEALER TECHNIQUE GUIDE



1. Shake bottle to fluff the powder. Use big end of spoon to make one scoop of powder, and use a spatula edge to level off. Dispense leveled scoop onto mixing surface.



2. Shake the gel bottle 3 times. Make sure that all gel is concentrated in the spout of the bottle before dispensing drops.



3. Open the cap and dispense 4 drops of MTA^{PEX} gel next to the powder.



4. Gradually combine the gel by spatulating the powder/gel mixture to ensure all the powder is thoroughly wetted by the gel. If the powder is not added gradually, in small amounts, the consistency may be too thick to dispense with the NaviTip™ 29 ga sideport tip.

DELIVERING MTAPEX™ BIOCERAMIC ROOT CANAL SEALER USING NAVITIP™ 29 ga SINGLE SIDEPORT TIP



Remove the plunger from the clear Skini syringe. Take small portions of mixed MTApeX sealer and insert in the back of the barrel of the skini syringe. Replace the plunger.



Attach the tip securely onto skini syringe. Gently press the plunger to remove the air inside the syringe.



Verify flow of sealer prior to applying intraorally.



Place the sealer using the required tip in the treatment site following the listed precautions on the IFU.



Insert the disinfected and dried master gutta percha point slowly into the canal.



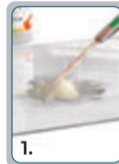
Add as many gutta percha points as your desired obturation technique requires.



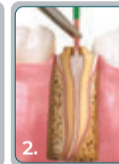
Remove excess gutta percha at the orifice following manufacturer's direction.



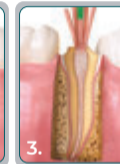
DELIVERING MTAPEX™ BIOCERAMIC ROOT CANAL SEALER USING GUTTA PERCHA



Coat the disinfected and dried master gutta percha point with the mixed MTApeX sealer.



Slowly insert into the canal.



Add as many gutta percha points as your desired obturation technique requires.



Remove excess gutta percha at the orifice following manufacturer's direction.